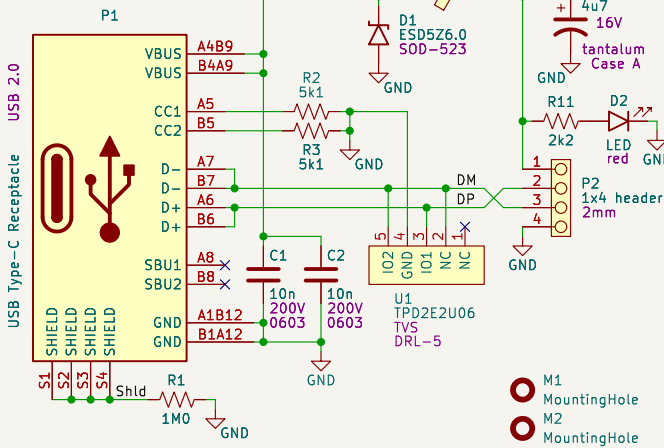
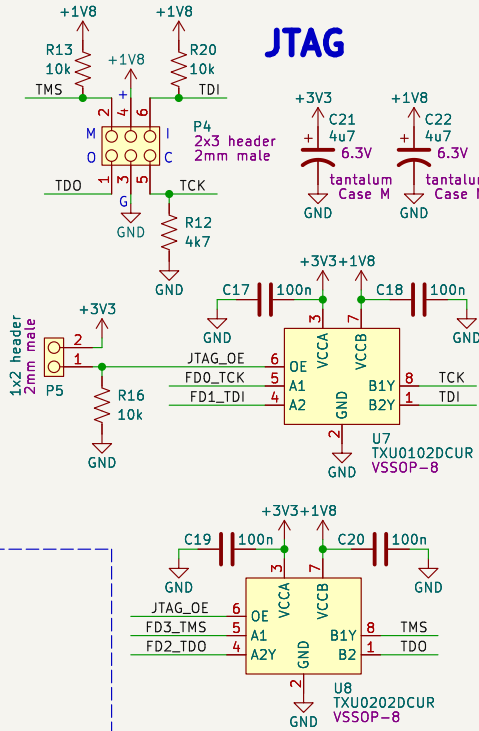


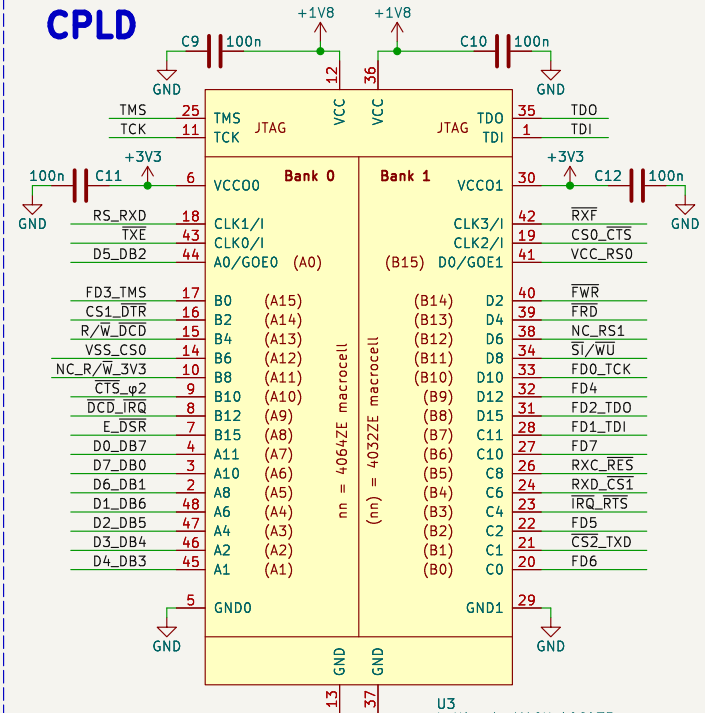
USB Connector



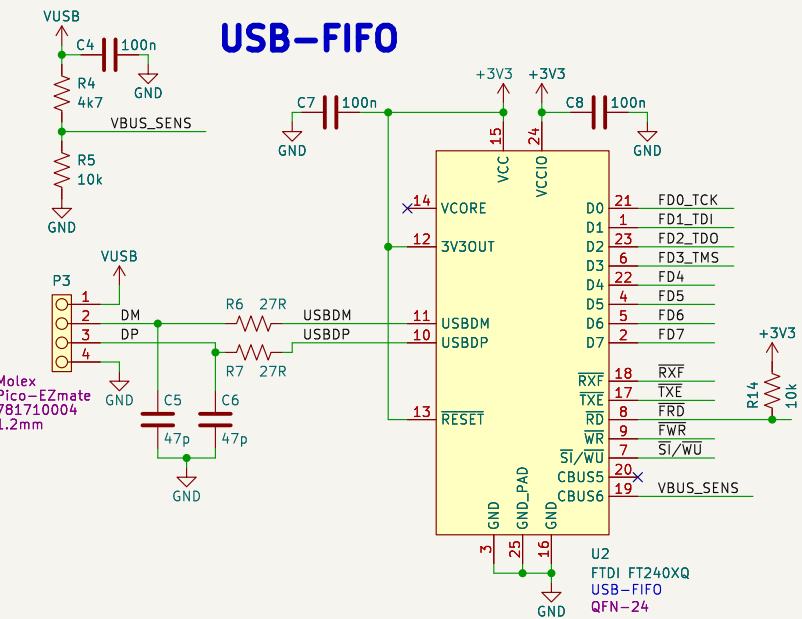
JTAG



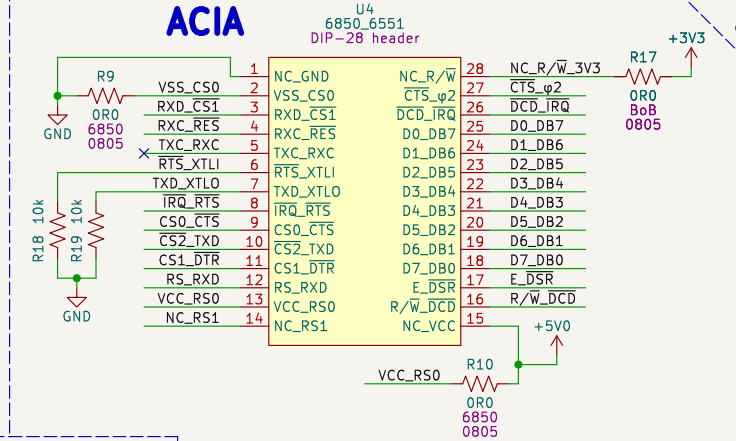
CPLD



USB-FIFO



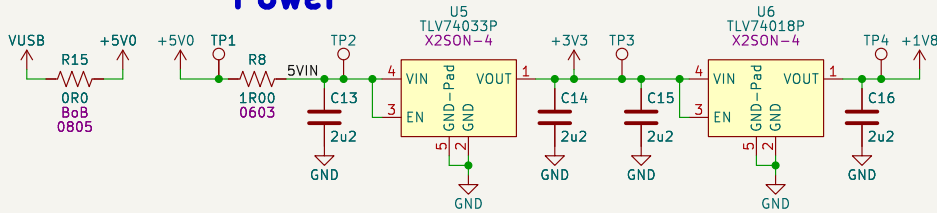
ACIA



NOTES:

- Install R9 and R10 for 6850, omit for 6551 or breakout board.
- Install R15 and R17 for breakout board, omit for 6850 or 6551.
- Install 24-pin DIP header for 6850, install 28-pin DIP header for 6551 or breakout board.
- Install P4 to use external JTAG programmer, install P5 to program via onboard USB port.
- add teardrops to connector pads
- check and correct mask and paste layers

Power



KiKit Tabs

- T1
- T2
- T3
- T4

David C. Wiens

Sheet: /
File: ST68F50.kicad_sch

Title: ST68F50/ST65F51 ACIA to USB-FIFO Prototype

Size: USLetter Date: 2026-Apr-02 13:12 PDT
KiCad E.D.A. kicad 7.0.9

Rev: 1.0
Id: 1/1